

FULLY AUTOMATIC

Movable Partition

Partitions | Operable | Automatic | Roll formed | STC 56 dB



SSJ Partition Wall Co. Ltd

G103, No. 3 Dalisha Rd, Zhucun, Tianhe District, Guangzhou China.
T: 86 191 2866 3436 E: suzubin@ssjpartition.com

All rights reserved. No part of this publication may be reproduced, stored in any retrieval system, or transmitted in any form or by any means, photocopying, or otherwise without the publisher's prior written permission.





WHY SSJ PARTITIONS

SSJ Partition Co. Ltd is a modern enterprise focusing on high-end partition walls design, research and development, production, installation and after-sales service. We are committed to providing customers with high-quality, personalized, environmentally friendly and energy-saving partition solutions to help create efficient, comfortable and beautiful flexible spaces.

Product advantages:

- Excellent quality: Select high-quality raw materials, adopt advanced structural production technology and strict quality control system to ensure that the products are durable, soundproof, safe and environmentally friendly.
- Diverse designs: With a professional design team, we can provide partition walls of various styles, functions and materials according to customer needs to meet the needs of different styles of space.
- Powerful functions: The product has good sound insulation and fireproof properties, and can integrate functions such as blinds, access control, and intelligent control to improve space utilization.
- Convenient installation: Modular design is adopted, which is quick and easy to install, and can be disassembled and assembled repeatedly to meet the needs of flexible and changeable space.
- Environmental protection and energy saving: The product meets national environmental protection standards, can be recycled, effectively reduces energy consumption, and helps green office.



Automatic System

SERVOMOTOR

We can choose Germany brand motor if you need.

Voltage	Frequency	Power	Running Speed	Working Temperature
AC150V~250V	50~60 Hz	100 W	100~250 mm/s	-20℃~+60℃
Loading	Panel Width	Max Height	Manual Thrust	Closing Force
300kg/m	600mm~3000mm	12000mm	<300N	200N<F<400N



Control System

Industrial programmed control, each panel is automatically and precisely positioned by an encoder.



Smart Touchscreen

Engineered for reliability, our touchscreen boasts a smart modular design. Its rational architecture allows for swift, simple maintenance, minimizing downtime and ensuring continuous operation.



Die Casting Parts

The die-casting process, the parts combine high dimensional accuracy with high strength and hardness, making them directly suitable for high-load applications.



Convenience Remote Control

Experience ultimate comfort and efficiency. Remote control allows for effortless command from a distance, simplifying your daily tasks and interactions.

Panel Features

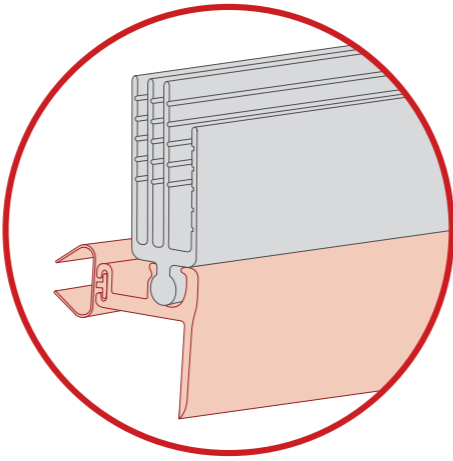
Steel Frame

The frame is made of 2mm welded heavy-duty galvanized steel. It provides the frame with high rigidity & durability.



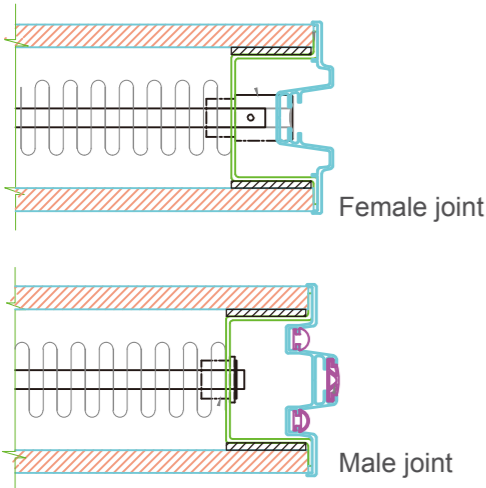
New Sweep Seals

Four-finger sweep seals are installed at panel's top and bottom, which increase the contact point by 50%, when comparing to the past product series. It provides optimum seal contact to keep out sound effectively.



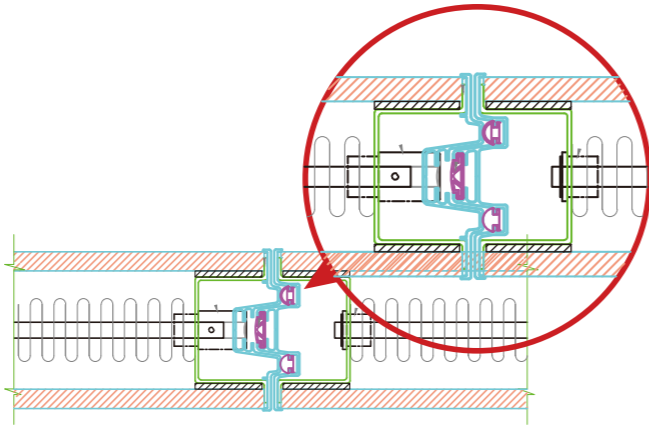
Improved Trim System

Trimmed and trimless designs provide options for reinforced and replaceable face panels, catering different design proposals.



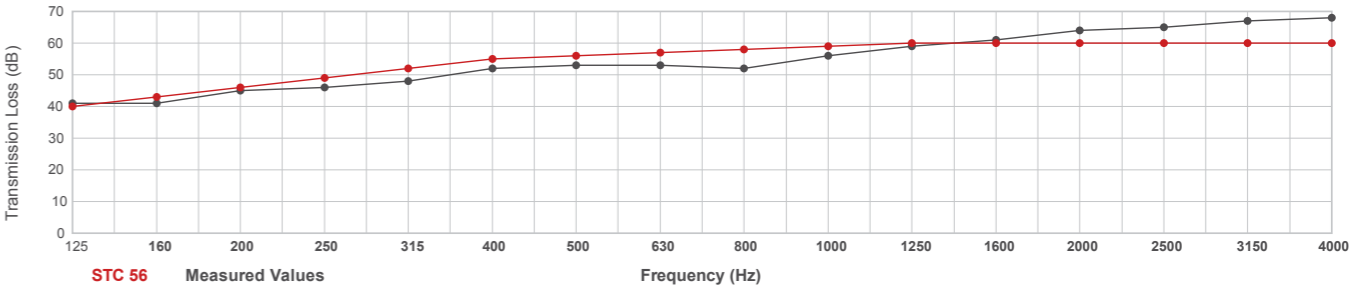
Improved Trim System

The single design bullnose replaces the traditional male and female-sided bullnose. Equipped with vertical compressive seals, it improves the depth of interlocking, and prevents sound leaks effectively.



- 1 Standard clearance top 25mm and bottom 38mm mechanical seals, together with the four-finger multiple contact sweep seals, keep out sound effectively.
- 2 Roll formed steel frame, this ensures that the connections between each frame are more precise, achieving seamless integration, thereby significantly enhancing the overall structural stability and durability. This optimized design not only improves the load-bearing capacity and seismic performance of the frames but also guarantees long-term, stable operation of the panels, meeting high standards of safety and quality requirements.
- 3 Galvanized steel face as standard face finishes enable genuine fire resistance and superior acoustic insulation performance. Single seamless panel with a maximum height of 18m.
- 4 Waist-high seal activator for easy operation. Virtually indestructible crank down top and bottom mechanical seals provide the most reliable and fastest operation.
- 5 Acoustics performance achieves STC 56 on ASTM Complete Operable System Test Report.
- 6 Unfinished panels are available to accommodate field-applied finishing. Standard face finish can be MDF, steel face, carpet fabric, wood veneers and other custom finishes are also available.

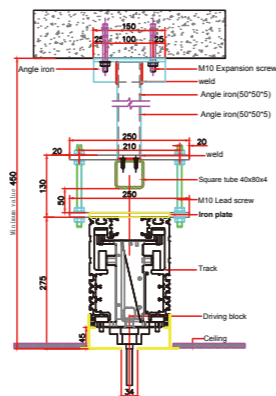
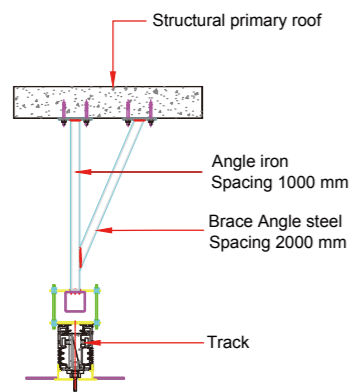
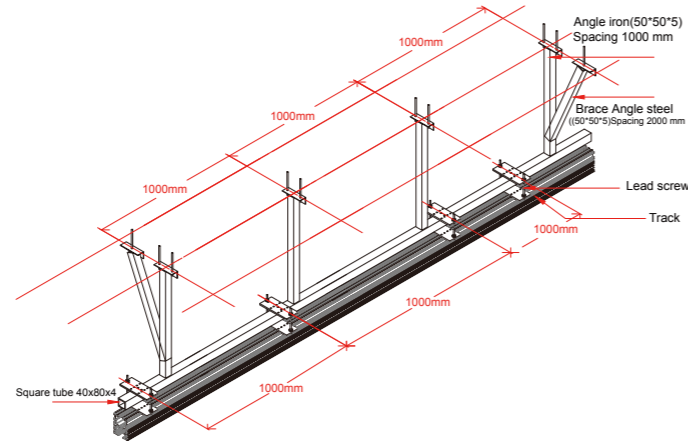
STC 56 Laboratory Test Result



Track Systems

A high quality track system ensures that SSJ partitions will operate smoothly for years to come and assist in the quick set-up and storage of panels. All SSJ tracks have been rigorously tested for a minimum of 150 miles (241km), approx. 20 years of usage cycle time. Job requirements vary, which is why SSJ offers a wide selection of tracks to meet your operating requirements.

Aluminum Track Installation



Panel Construction

- Panels are nominal 100mm in thickness. The single seamless panels are up to 18 meters high.
- 2mm welded, heavy-duty, galvanized steel frame supplied with integral factory applied aluminum vertical edge and face protection. Frame without protective vertical face trim is another option for a monolithic look.
- Acoustical faces are available on each side of the panel. Galvanized steel plate provide appropriate acoustical performance that meet STC requirements.
- Roll formed steel frame, this ensures that the connections between each frame are more precise, achieving seamless integration, thereby significantly enhancing the overall structural stability and durability.

Seal System

- Vertical sound seals are of “tongue and groove” configuration to ensure panel-to-panel alignment and prevent sound leaks between panels.
- Horizontal sweep seals and retractable seals between panels and top supporting track can provide 25mm nominal operating clearance.
- Four-finger horizontal sweep seals and retractable seals between panels and floor can provide a range of 38mm nominal operating clearance to accommodate normal floor gradient.
- Top and bottom horizontal seals can be operated simultaneously by a removable handle with a crank down mechanical.
- Top and bottom retractable seals not only stable the panels, but also exert at least 25kg upward and downward force when extended.

Finishes

- Unfinished panels are available to accommodate field-applied finishing.
- Standard face finish can be MDF, steel face, carpet fabric, wood veneers and other custom finishes are also available.

Suspension System

- Track consists of clear anodized architectural-grade aluminum alloy 6063-T6. Track incorporates alignment pins for positive alignment, is utilized for optimum sound control, and have integral support for adjoining ceiling, soffit, or plenum sound barrier.
- Track intersections must be designed and constructed to enable smooth operation. They are made from the same architectural-grade extruded aluminum similar to the regular track without variation in texture and colour.
- Track carriers are made with precision ground steel ball bearing wheels encased in molded polymer or precision steel tires to protect the running aluminum track surface.

Partition System

- The lead panel has the option of being fixed into an acoustical wall jamb or complete with balloon vinyl seal without the need of a wall jamb.
- “Final closure” panel comes with an expandable jamb exerting a minimum of 110kg (250lbs) force to tighten the partition for optimum acoustics.
- Single or double inset pass doors of the same panel thickness are also available without the need for protruding door hardware.

Acoustics

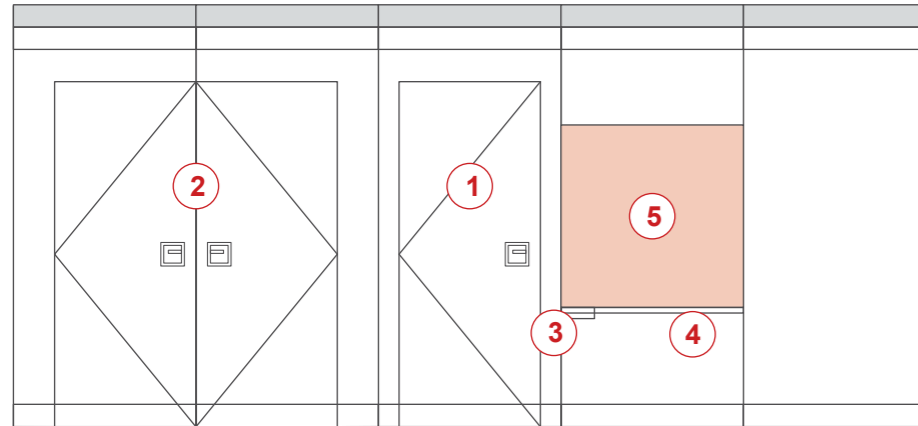
- The partition system has been tested by a recognized independent acoustical laboratory according to either ISO 140-3 or ASTM E90 standard for sound ratings.

Warranty

- The fully automatic partition motor system purchased and installed by the manufacturer’s authorized agents shall be entitled to a warranty of 1-year.
- The partition system shall be entitled to a 6-year warranty for free.

Accessories

A variety of accessories and work surfaces are available to provide the functionality and aesthetics you need.



- ① Single Pass Door
- ② Double Pass Door
- ③ Eraser Pocket
- ④ Recessed Chalk Tray
- ⑤ Work Surface:
Tackboard/ Dry Marker Board

Pass Door Features

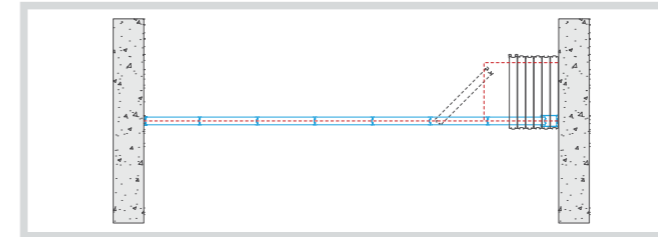
SSJ's pass door has been designed to provide optimal in-field performance. Features include:

- Rigid steel truss frame for durability
- Protective edge trim for durability and visual aesthetics
- Perimeter compression seals
- No exposed fasteners on inside of door frame
- Positive latching door hardware
- Automatic bottom seals with downward force to stabilize door in opening
- Door leaf compensates for floor variances with a field adjustable mechanical bottom seal



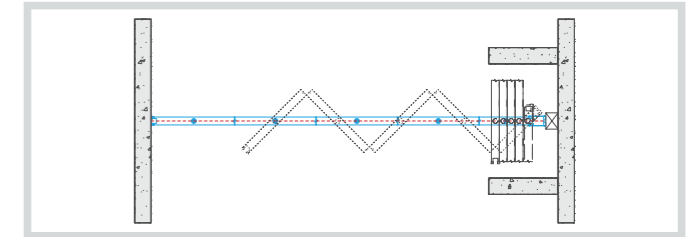
Operable Partitions Types

Omni-Directional Panels



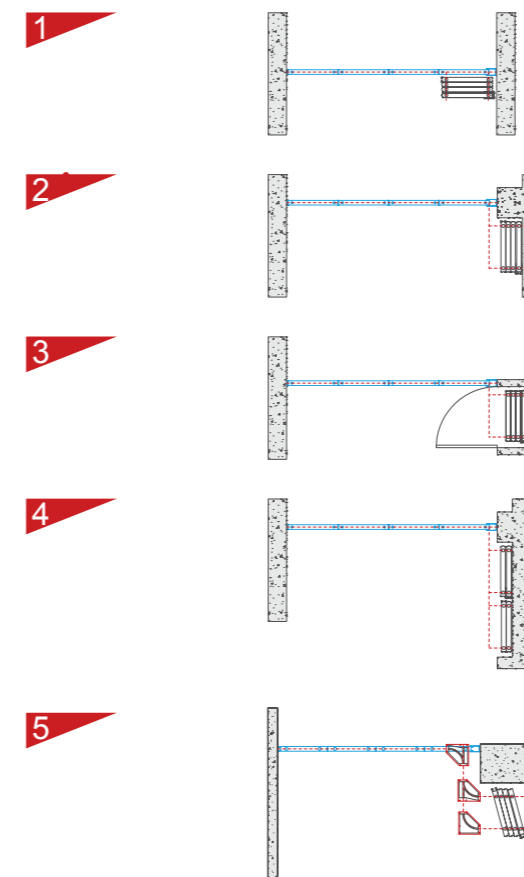
Omni-directional panels provide the ultimate flexibility to your operations because each individual panel can easily turn around corners and move to alternate locations or remote storage. Therefore, many different storage layouts can be created to fit your floor design and layout.

Continuously Hinged Panels



Continuously hinged panels are hinged together and move from wall to wall in a straight line. Electrically operated for fast, easy set-up.

Storage Layout Options



Storage Layout Options

