

W Type Operable Partition

Partitions . Operable | Automatic | Roll formed | STC 50 dB

Why SSJ Partition?

Your Vision, Our Precision – Custom Solutions Crafted for You.



SSJ Partition Wall Co. Ltd

G103, No. 3 Dalisha Rd, Zhucun, Tianhe District, Guangzhou China.
T: 86 191 2866 3436 E: suzubin@ssjpartition.com

All rights reserved. No part of this publication may be reproduced, stored in any retrieval system, or transmitted in any form or by any means, photocopying, or otherwise without the publisher's prior written permission.

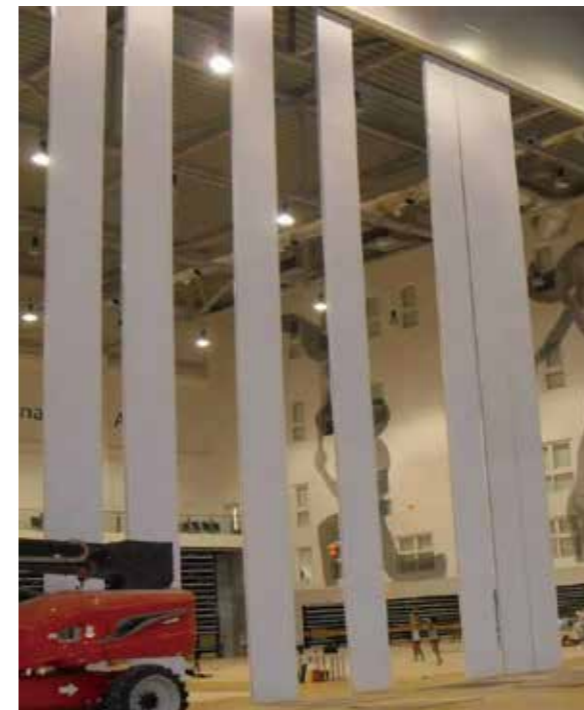
SSJ W type operable partitions



SSJ Partition Co. Ltd is a modern enterprise focusing on high-end partition walls design, research and development, production, installation and after-sales service. We are committed to providing customers with high-quality, personalized, environmentally friendly and energy-saving partition solutions to help create efficient, comfortable and beautiful flexible spaces.

Product advantages:

- Excellent quality: Select high-quality raw materials, adopt advanced structural production technology and strict quality control system to ensure that the products are durable, soundproof, safe and environmentally friendly.
- Diverse designs: With a professional design team, we can provide partition walls of various styles, functions and materials according to customer needs to meet the needs of different styles of space.
- Powerful functions: The product has good sound insulation and fireproof properties, and can integrate functions such as blinds, access control, and intelligent control to improve space utilization.
- Convenient installation: Modular design is adopted, which is quick and easy to install, and can be disassembled and assembled repeatedly to meet the needs of flexible and changeable space.
- Environmental protection and energy saving: The product meets national environmental protection standards, can be recycled, effectively reduces energy consumption, and helps green office.



Features

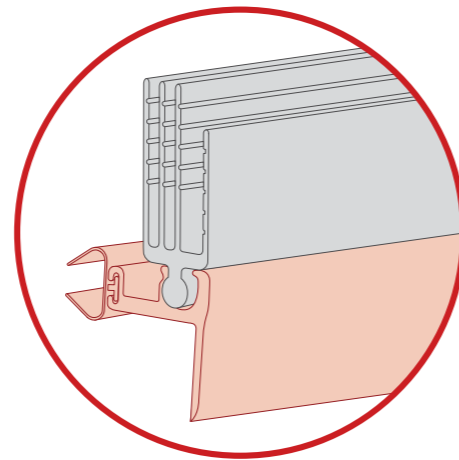
Steel Frame

The frame is made of 2mm welded heavy-duty galvanized steel. It provides the frame with high rigidity & durability.



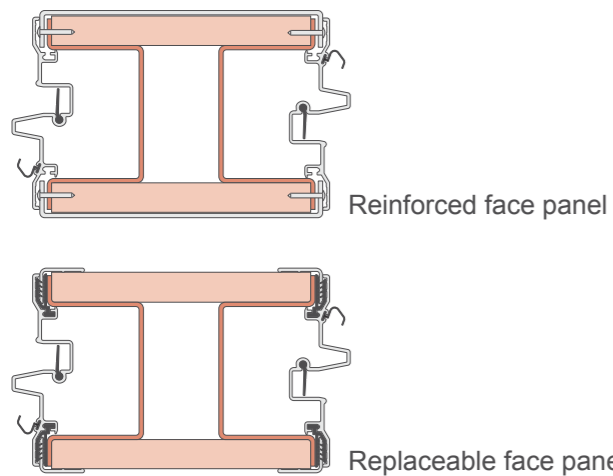
New Sweep Seals

Four-finger sweep seals are installed at panel's top and bottom, which increase the contact point by 50%, when comparing to the past product series. It provides optimum seal contact to keep out sound effectively.



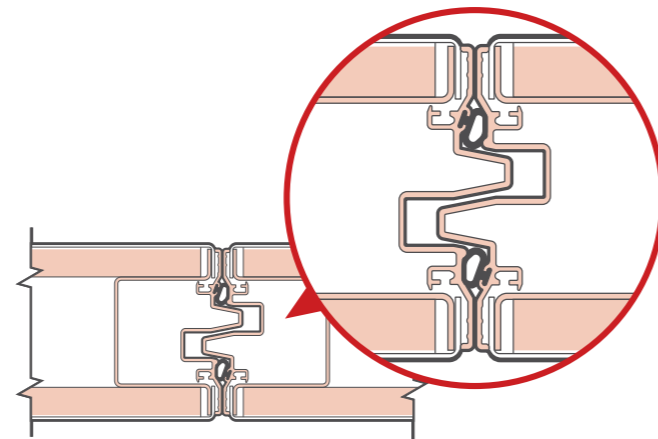
Improved Trim System

Trimmed and trimless designs provide options for reinforced and replaceable face panels, catering different design proposals.



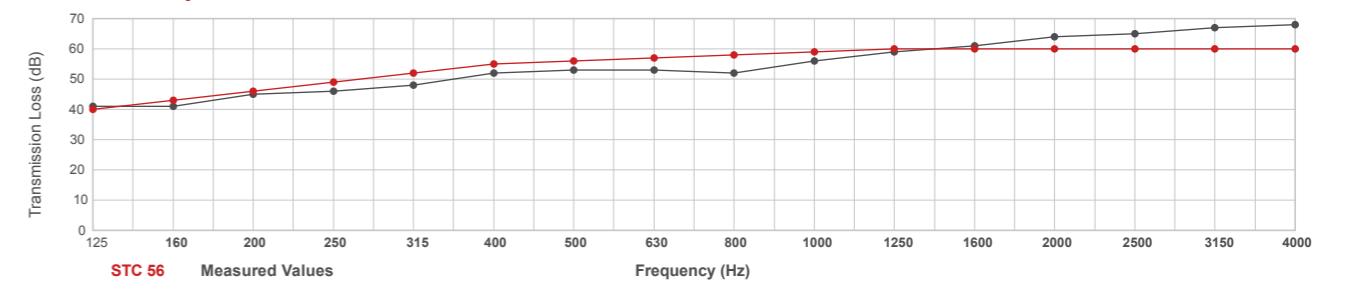
Improved Trim System

The single design bullnose replaces the traditional male and female-sided bullnose. Equipped with vertical compressive seals, it improves the depth of interlocking, and prevents sound leaks effectively.



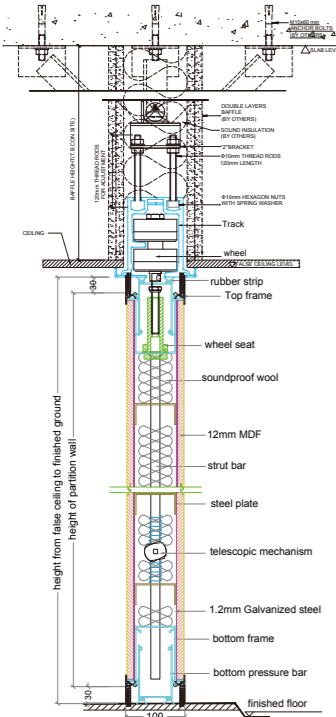
- 1 Standard clearance top 25mm and bottom 38mm mechanical seals, together with the four-finger multiple contact sweep seals, keep out sound effectively.
- 2 Roll formed steel frame, this ensures that the connections between each frame are more precise, achieving seamless integration, thereby significantly enhancing the overall structural stability and durability. This optimized design not only improves the load-bearing capacity and seismic performance of the frames but also guarantees long-term, stable operation of the panels, meeting high standards of safety and quality requirements.
- 3 Galvanized steel face as standard face finishes enable genuine fire resistance and superior acoustic insulation performance. Single seamless panel with a maximum height of 18m.
- 4 Waist-high seal activator for easy operation. Virtually indestructible crank down top and bottom mechanical seals provide the most reliable and fastest operation.
- 5 Acoustics performance achieves STC 56 on ASTM Complete Operable System Test Report.
- 6 Unfinished panels are available to accommodate field-applied finishing. Standard face finish can be MDF, steel face, carpet fabric, wood veneers and other custom finishes are also available.

STC 56 Laboratory Test Result

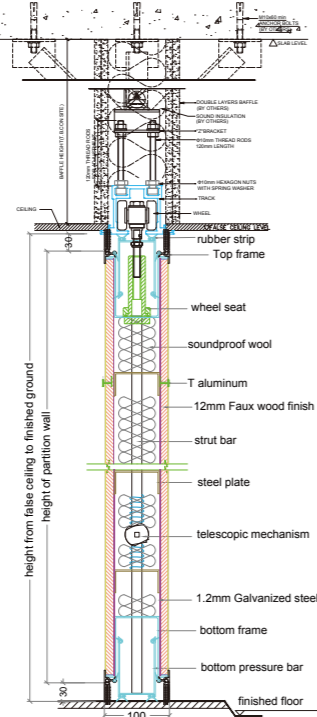


Features

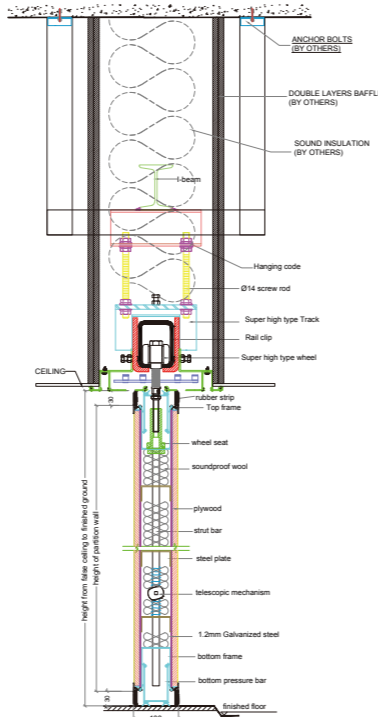
Omni-Directional Panels Vertical Section



Paired Panels Vertical Section



Supper High Panels Vertical Section



Panel Construction

- Panels are nominal 100mm in thickness. The single seamless panels are up to 18 meters high.
- 2mm welded, heavy-duty, galvanized steel frame supplied with integral factory applied aluminum vertical edge and face protection. Frame without protective vertical face trim is another option for a monolithic look.
- Acoustical faces are available on each side of the panel. Galvanized steel plate provide appropriate acoustical performance that meet STC requirements.
- Roll formed steel frame, this ensures that the connections between each frame are more precise, achieving seamless integration, thereby significantly enhancing the overall structural stability and durability.

Seal System

- Vertical sound seals are of “tongue and groove” configuration to ensure panel-to-panel alignment and prevent sound leaks between panels.
- Horizontal sweep seals and retractable seals between panels and top supporting track can provide 25mm nominal operating clearance.
- Four-finger horizontal sweep seals and retractable seals between panels and floor can provide a range of 38mm nominal operating clearance to accommodate normal floor gradient.
- Top and bottom horizontal seals can be operated simultaneously by a removable handle with a crank down mechanical.
- Top and bottom retractable seals not only stable the panels, but also exert at least 25kg upward and downward force when extended.

Finishes

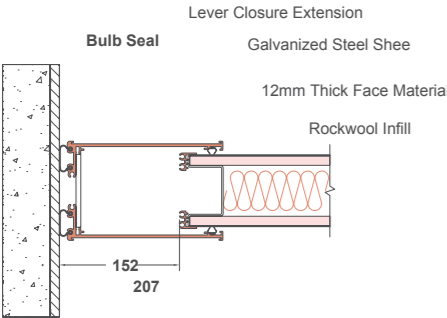
- Unfinished panels are available to accommodate field-applied finishing.
- Standard face finish can be MDF, steel face, carpet fabric, wood veneers and other custom finishes are also available.

Suspension System

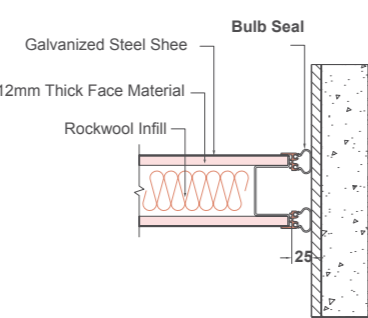
- Track consists of clear anodized architectural-grade aluminum alloy 6063-T6. Track incorporates alignment pins for positive alignment, is utilized for optimum sound control, and have integral support for adjoining ceiling, soffit, or plenum sound barrier.
- Track intersections must be designed and constructed to enable smooth operation. They are made from the same architectural-grade extruded aluminum similar to the regular track without variation in texture and colour.
- Track carriers are made with precision ground steel ball bearing wheels encased in molded polymer or precision steel tires to protect the running aluminum track surface.
- A selection of tracks, from aluminum track systems of Type 65, Type 80, Type 100, Type CGL, Type QZD to steel track systems Type CGG, all are available to accommodate the weight and function of the model selected.

Horizontal Sections

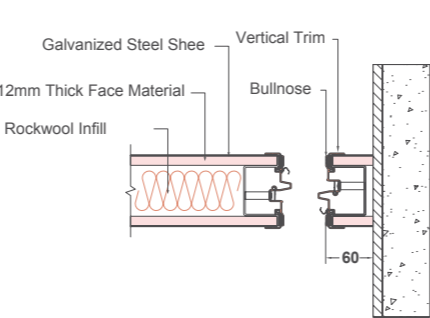
Lever Closure



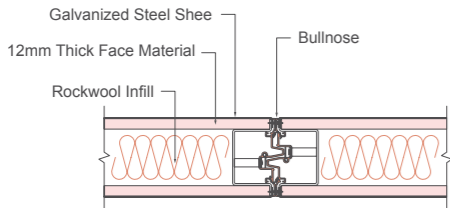
Bulb Seal



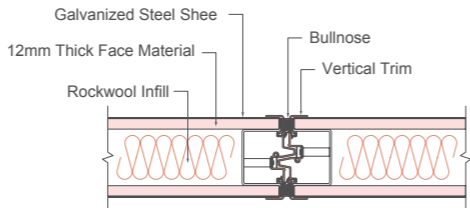
Wall Jamb



Typical Panel Joint (Without Vertical Trim)



Typical Panel Joint (With Vertical Trim)



Partition System

- The lead panel has the option of being fixed into an acoustical wall jamb or complete with balloon vinyl seal without the need of a wall jamb.
- “Final closure” panel comes with an expandable jamb exerting a minimum of 110kg (250lbs) force to tighten the partition for optimum acoustics.
- Single or double inset pass doors of the same panel thickness are also available without the need for protruding door hardware.

Acoustics

- The partition system has been tested by a recognized independent acoustical laboratory according to either ISO 140-3 or ASTM E90 standard for sound ratings.

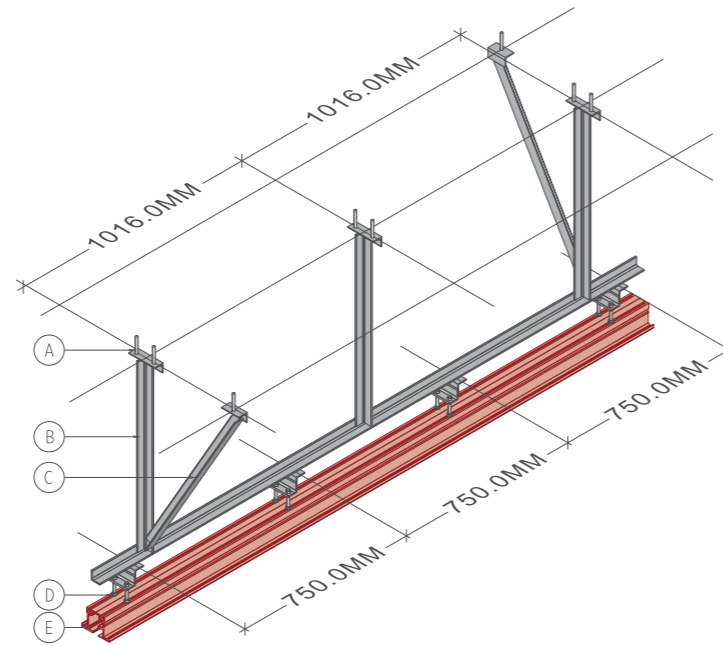
Warranty

- The partition system purchased and installed by the manufacturer’s authorized agents shall be entitled to a warranty of 2-year against defects in material and workmanship.
- The steel frame shall be entitled to a 5-year warranty for free.

Track Systems

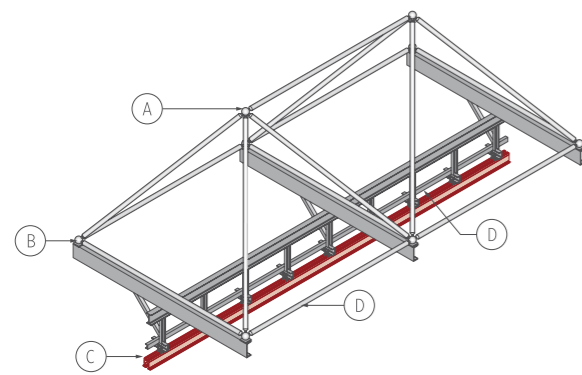
A high quality track system ensures that SSJ partitions will operate smoothly for years to come and assist in the quick set-up and storage of panels. All SSJ tracks have been rigorously tested for a minimum of 150 miles (241km), approx. 20 years of usage cycle time. Job requirements vary, which is why SSJ offers a wide selection of tracks to meet your operating requirements.

Aluminum Track Installation



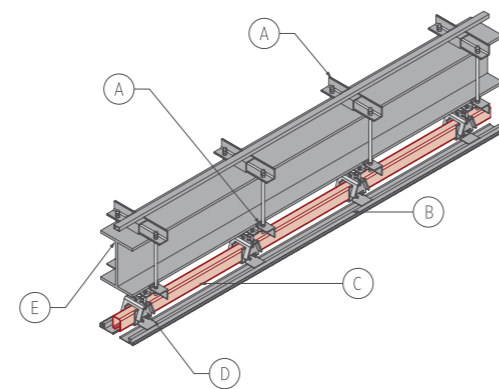
- (A) Anchor Bolt
- (B) Vertical Angle Iron
- (C) Sway Angle Iron
- (D) Hanger Rod
- (E) Aluminum Track

Space Frame Installation



- (A) Upper Node
- (B) Type 100 Track
- (C) Lower Node
- (D) Space Frame Structure

Steel Track Installation



- (A) Angle Iron
- (B) Track Aluminum Trim
- (C) Type CGG Track
- (D) Suspension bracket
- (E) I-beam

Aluminum Track Systems

Omni-Directional Panels

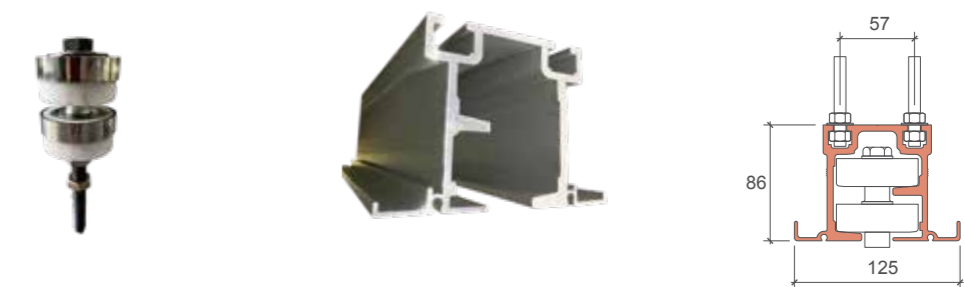
Dual wheel trolleys that negotiate 90° turns, through X, L, and T intersections. Two carriers are provided per panel. Each carrier has two horizontal counter-rotating wheels that roll (not slide) in the track. Each wheel has precision-ground bearings, encased with plastic for quiet operation. Carriers easily negotiate square or angled corners without switches.

TYPE 65



Weights up to 1200lbs (545kg) per panel

TYPE 80



Weights up to 1000lbs (455kg) per panel

TYPE 100



Weights up to 1500lbs (680kg) per panel

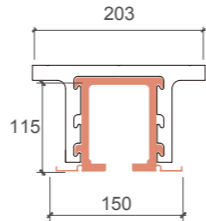
Operable Partitions Types

Paired Panels

One 4-wheeled carrier is provided per panel. Each wheel is made of molded polymer tires on hardened steel ball bearings.

TYPE CGL

Resilient mounted body for quiet operation and load distribution

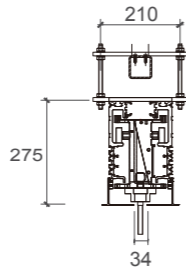


Weights up to 900lbs (408kg) per panel

Electrical Panels

TYPE QZD

Weights up to 900lbs (408kg) per panel



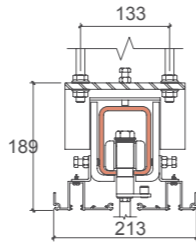
Steel Track Systems

Omni-Directional, Paired and Electrical Panels

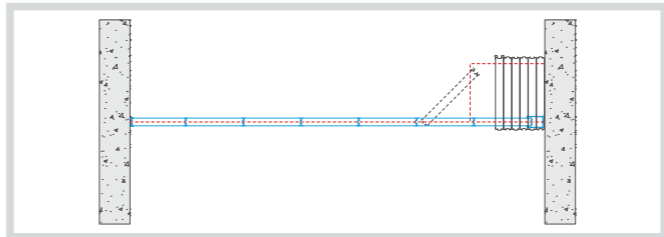
SSJ steel track is used when the partition height or weight limit exceeds that recommended for the aluminum system.

TYPE CGG

Weights up to 3000lbs (1364kg) per panel

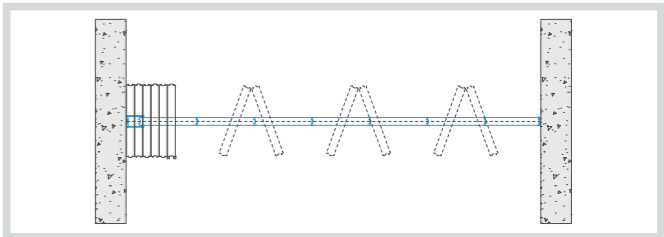


Omni-Directional Panels



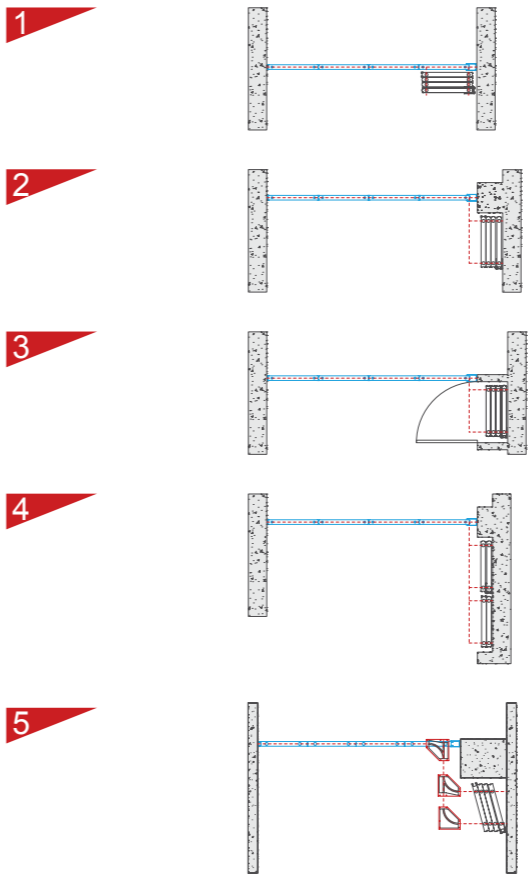
Omni-directional panels provide the ultimate flexibility to your operations because each individual panel can easily turn around corners and move to alternate locations or remote storage. Therefore, many different storage layouts can be created to fit your floor design and layout.

Paired Panels

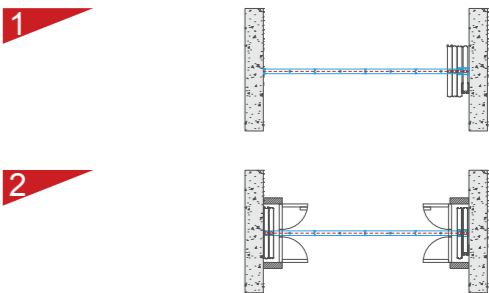


When remote storage is not required, the center-hung panels hinged in groups of two or three, are the ideal solution for quicker and easier set up, than omni-direction panels. Optional hinging is available to accommodate moldings or other decorations. Acoustical ratings are the same as omni-direction Panels.

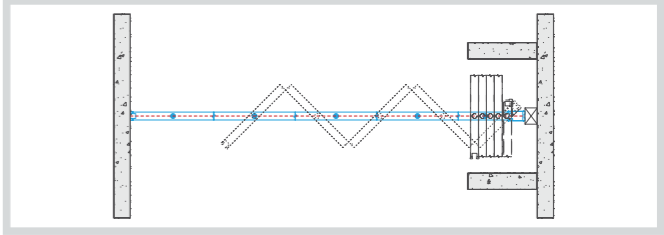
Storage Layout Options



Storage Layout Options



Continuously Hinged Panels

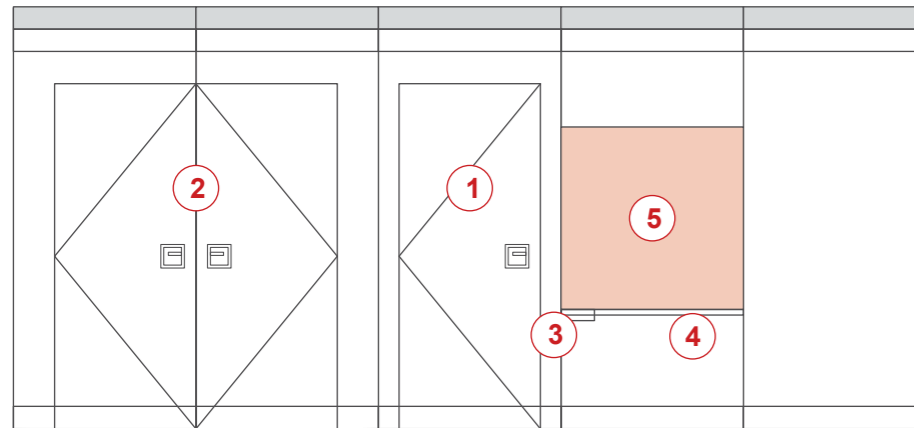


Continuously hinged panels are hinged together and move from wall to wall in a straight line. Electrically operated for fast, easy set-up.

* Type CGG steel track only

Accessories

A variety of accessories and work surfaces are available to provide the functionality and aesthetics you need.



- ① Single Pass Door
- ② Double Pass Door
- ③ Eraser Pocket
- ④ Recessed Chalk Tray
- ⑤ Work Surface:
Tackboard/ Dry Marker Board

Pass Door Features

SSJ's pass door has been designed to provide optimal in-field performance. Features include:

- Rigid steel truss frame for durability
- Protective edge trim for durability and visual aesthetics
- Perimeter compression seals
- No exposed fasteners on inside of door frame
- Positive latching door hardware
- Automatic bottom seals with downward force to stabilize door in opening
- Door leaf compensates for floor variances with a field adjustable mechanical bottom seal

